


LARGO FROM CHAMBER CONCERTO

VIOLA

ORIGINALLY FOR LUTE AND STRINGS

LARGO in 8  = 60

ANTONIO VIVALDI
string arrangement by Q

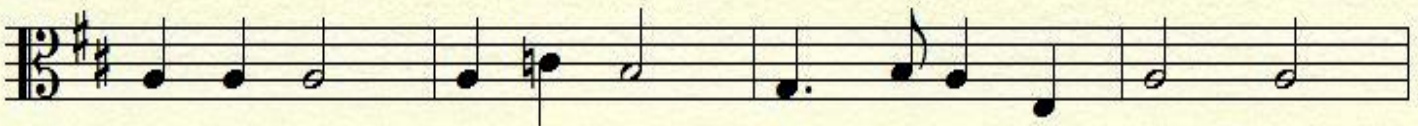


SOTTO VOCE

7



13



17



Come Play Your Part! www.stringquest.com

© Copyright 2013 "The Quest for String Playing Mastery"